



LEVEL FIT OFFSET CLOSET FLANGES TECHNICAL SPECIFICATION

SPECIFICATIONS

Oatey Level Fit Offset Closet Flanges with Metal Ring are designed to connect a water closet outlet to a plumbing system and sit flush with the floor. 3" or 4" Level Fit Offset Closet Flange solvent welds over 3" Schedule 40 DWV pipe or inside 4" Schedule 40 DWV pipe.

DESCRIPTION

- Designed with 2" offset to allow for a margin of error for drain pipe/ flange alignment
- Metal ring provides added strength and cracking resistance to the flange and can be rotated to allow precise alignment of bolts and screws.

APPROVALS & LISTINGS

PVC Compliance Listing	IAPMO Listing File #2896 Markings:UPC, cUPC, ASTM D 2665
ABS Compliance Listing	IAPMO Listing File # 3905 Markings: UPC, cUPC, ASTM D 2661



PHYSICAL PROPERTIES

ABS Plastic	Black
PVC Plastic	White
Stainless Steel Ring	400 Series
Metal Ring	Painted

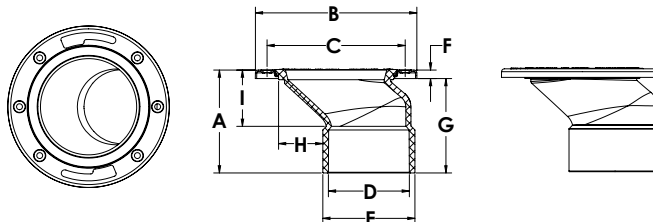
PRODUCT SELECTOR

LEVEL FIT OFFSET CLOSET FLANGE			
✓	Product Number	Description	Pack
	43500	3"x 4" ABS Offset Closet Flange, metal ring	12
	43501	3"x 4" PVC Offset Closet Flange, metal ring	12
	43804	3"x 4" PVC Offset Closet Flange, metal ring	16
	43605	3"-4" PVC Offset Closet Flange W/ SS Ring	12
	43606	3"-4" ABS Offset Closet Flange W/ SS Ring	12

Job Name	Item #
Location	
Engineer	Contractor
PO #	Tag
Representative	



LEVEL FIT OFFSET CLOSET FLANGE WITH METAL AND STAINLESS STEEL RINGS



DIMENSIONS

LEVEL FIT OFFSET CLOSET FLANGE WITH METAL AND STAINLESS STEEL RINGS				
[A]:	Overall Height	4.47"	[F]:	Flange Ring Thickness 0.37"
[B]:	Overall Diameter	7.01"	[G]:	Depth 4.10"
[C]:	Screw Centers	6.00"	[H]:	Offset Distance 1.92"
[D]:	Hub I.D.	3.52"	[I]:	Offset Distance 2.44"
[E]:	Hub O.D.	4.00"		

Access BIM/Revit content through www.oatey.com